

Ben Simpson & Dustin Welch

# KAWANA HEALTH PRECINCT – THE RIPPLE EFFECT



# KAWANA HEALTH PRECINCT – RIPPLE EFFECT

## A Bolder Vision

### *“Australia’s healthiest City, on the Beach –*

“a centre for health and medical excellence, a thriving 24 hour hub that celebrates new ideas and innovation and that showcases our enviable Sunshine Coast lifestyle to rest of the World”



Diverse community life



Research and medicine



24/7 hub of activity



Economic driver



Connecting with water



Connected



Part of the Coast lifestyle



Holistic health & wellbeing



Entertainment



# KAWANA HEALTH PRECINCT - RIPPLE EFFECT

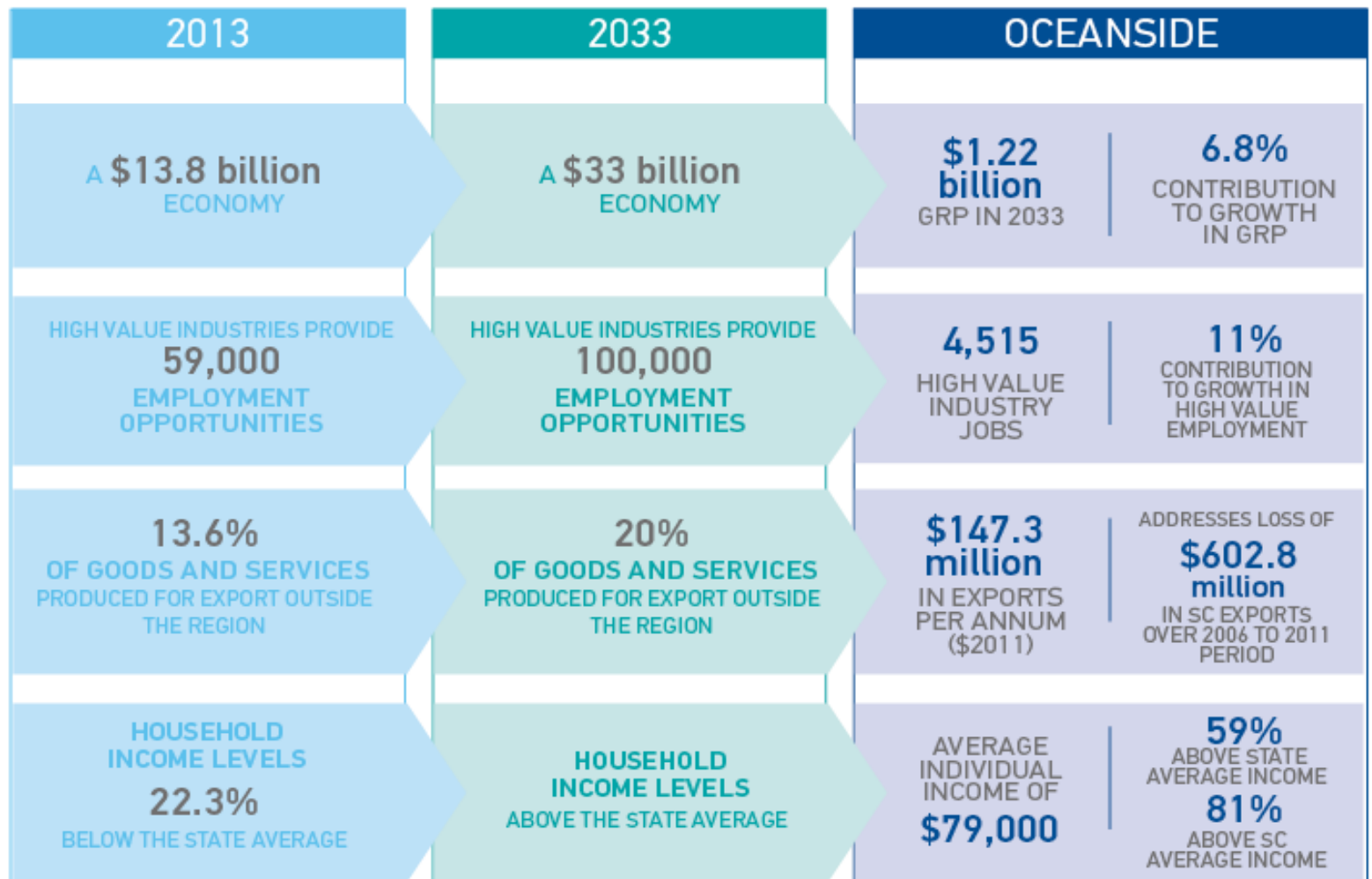
## Oceanside - An Integrated Community



- From trees to sea, from business to beach, Oceanside transforms physical, economic, social connections into opportunities

# KAWANA HEALTH CAMPUS - RIPPLE EFFECT

## Oceanside- Economic Impact



# KAWANA HEALTH CAMPUS - RIPPLE EFFECT

## Oceanside- Economic Impact

**Our communities, and the employment and lifestyle opportunities they provide, will attract new audiences to the Coast:**

- 9,500 people yet to move into Oceanside;
- high quality housing, infrastructure, amenity and educational opportunities are essential, close to work; and
- these audiences have different needs and tastes and they are constantly changing.



*Dr Muhammad Abdus Salam, Birtinya Resident*





# KAWANA HEALTH CAMPUS - RIPPLE EFFECT

## Current Status

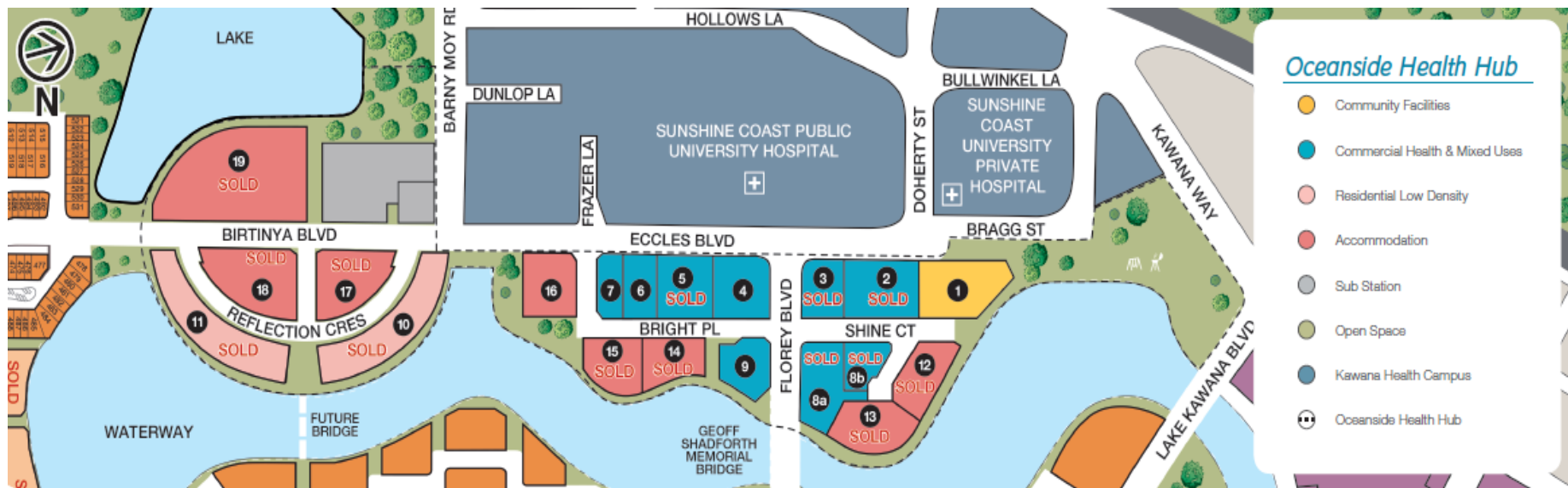


Commercial-in-confidence

# KAWANA HEALTH CAMPUS - RIPPLE EFFECT

## Oceanside Health Hub - Australian 1st

**First of its kind in Australia** – master planned to accommodate a broad range of complementary business and accommodation uses. A highly collaborative, 24/7 medical, science, research, technology, live, work, play precinct.





# KAWANA HEALTH CAMPUS - RIPPLE EFFECT

## Current Status





Pipeline	Lodged	Approved	Under Construction	Opened
<b>Stockland</b> Residential Apts 4 Storey, 80 Apts [Open 2018]	<b>Stockland</b> Retirement Village 1 x 8 Storey, 140 Apts [Open 2018]	<b>Minion Development</b> One Health Commercial & Health 6 storey, 8,500m <sup>2</sup> [Open 2017]	<b>Opal Aged Care</b> Aged Care 1 x 6 Storey, 150 Apts [Open 2016]	<b>Evans Long</b> Pulse Health + GF Retail 6 Storey, 4,500m <sup>2</sup>
<b>Midson Construction</b> Serviced Apts/Tavern 8 Storey, 60 Apts [Open 2018]	<b>RGD Property Group</b> Residential Apts 8 Storey, 60 Apts [Open 2017]		<b>Excel Development Grp</b> Multi Deck Car Park 6 Storey + GF Retail [Open 2016]	<b>Renard Group</b> Best Western Plus Hotel 4 Storey, 80 units
<b>Gardener Vaughn</b> Residential Apts 8 Storey, 60 Apts [Open 2018]	<b>RGD Property Group</b> Residential Apts 8 Storey, 60 Apts [Open 2017]			<b>Arena REIT Ltd</b> Child Care Centre 75 place
	<b>RGD Property Group</b> Residential Apts 8 Storey, 60 Apts [Open 2017]			<b>Stockland</b> 33 Residential Lots
	<b>RGD Property Group</b> Residential Apts 8 Storey, 60 Apts [Open 2017]			

# KAWANA HEALTH CAMPUS - RIPPLE EFFECT

## Committed uses

### Committed:

- aged care;
- palliative care;
- retirement village
- child care;
- residential accommodation;
- motel and conference facilities;
- medical & allied health operators (GP's and Specialists);
- doctors, specialists and clinicians;
- pathology, collection and labs;
  - haematology;
  - oncology;
- retail – pharmacy and other tenants soon to be announced
- ancillary retail, café, banking services; and
- multi deck car parking.





# KAWANA HEALTH CAMPUS - RIPPLE EFFECT

## What needs to be done?

### Target audiences:

- research & development;
- innovation & education
- pharmaceutical;
- medical products;
- health funds;
- government agencies;
- oncology; and
- rehabilitation.

### Moving forward:

- planning;
  - key stakeholders to lock down medical university and identify focus research area
  - identify additional land within balance master planned area with flexibility for health, education, research uses

# KAWANA HEALTH CAMPUS - RIPPLE EFFECT

## Stakeholder engagement

### Ongoing collaboration required with key stakeholders:

- Qld Health
- Sunshine Coast Hospital and Health Service
- Exemplar
- Trade Invest Queensland
- Ramsay Health Care
- Sunshine Coast Private Hospital
- University of the Sunshine Coast
- Qld Tafe East Coast
- Sunshine Coast Council
- Chambers of Commerce
- Sunshine Coast Business Council



North-east view of SCPUH main entrance, SARC training facilities and main hospital building. Image supplied by Qld Health